

You'll never look at shades the same way again

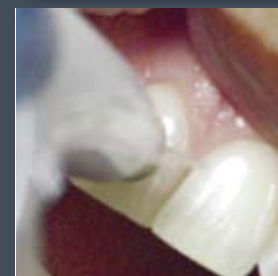
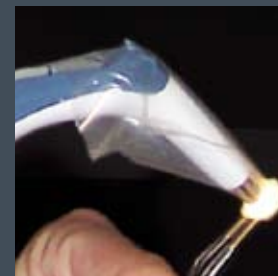
With the VITA Easyshade you can easily verify a precise, objective shade match, leaving you time to focus more on esthetics for increased patient satisfaction.

VIDENT™
VITA®

800-828-3839
800-263-4778 (Canada)
www.vident.com

© Vident 2008. All rights reserved. VITA Easyshade® is a registered trademark of Vident. VM, In-Ceram and 3D-Master are registered trademarks of VITA Zahnfabrik.

L-9250-V Rev.02/08

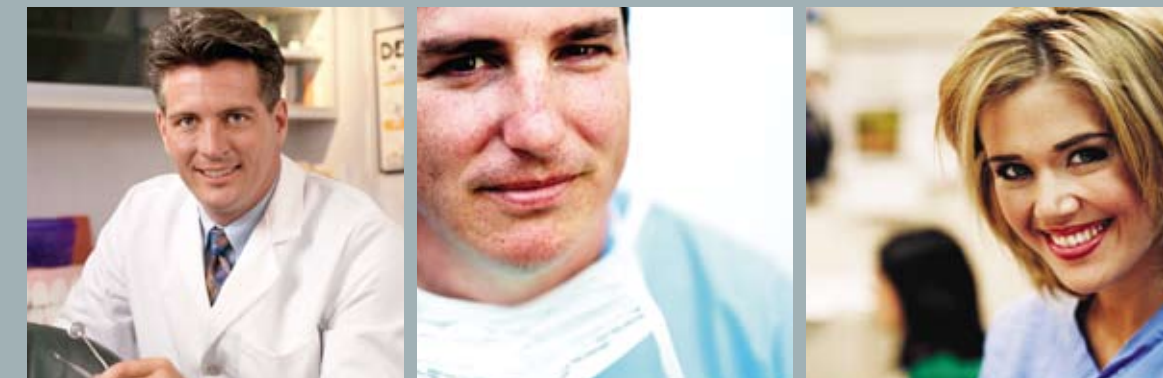


VIDENT™



VITA Easyshade®

3 Different Professional Shade Takers Can Lead To



3 DIFFERENT RESULTS

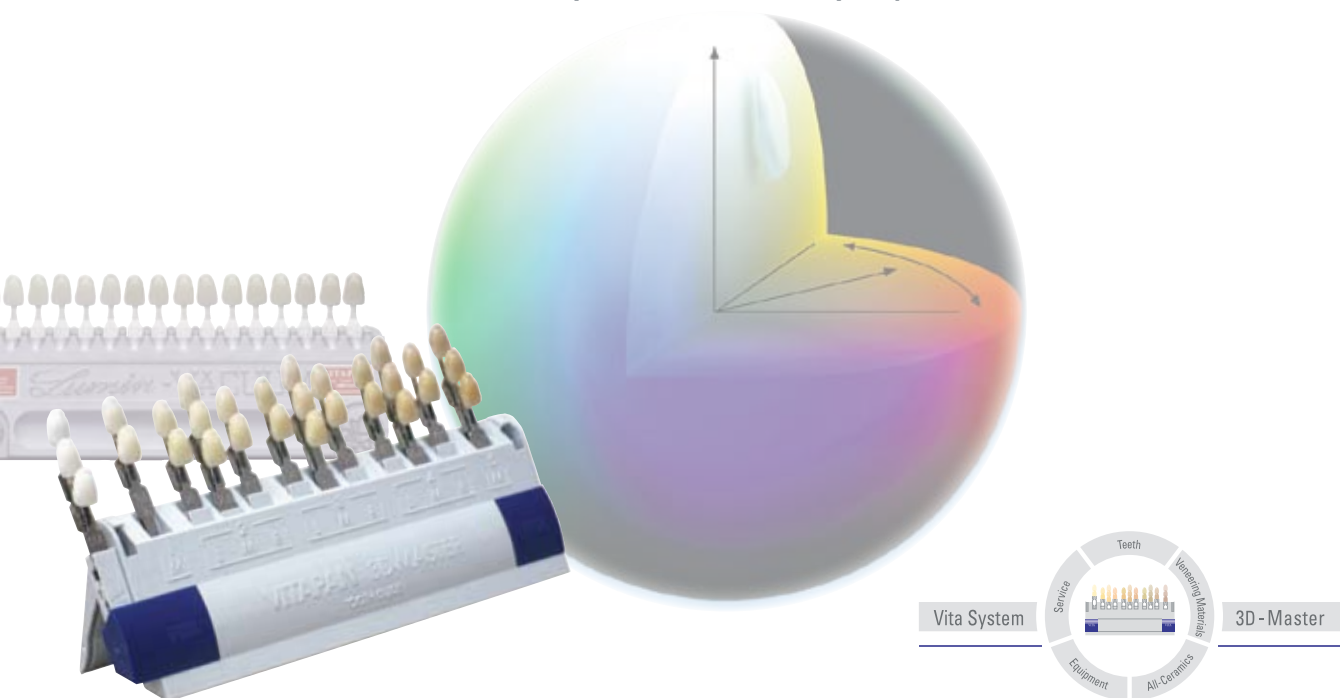
Now there's a FAST, EASY way to measure ACCURATE SHADES regardless of differences in color perception...

ADVANCED Color Technology

The VITA Easyshade incorporates multiple color spectrophotometers at varying angles for the measurement of exceptionally accurate shades.

In fact, the VITA Easyshade precisely measures 16 VITA Classical Shades, 29 VITA System 3D-Master® shades and even those hard-to-see intermediate shades. Bleached shades are easy to measure as well!

You are free to prescribe over 100 shades... shades that your lab can easily reproduce.



Highly Precise Spectrophotometer

The VITA Easyshade lets you offer – instantly – the absolute closest esthetic match to any VITA product:

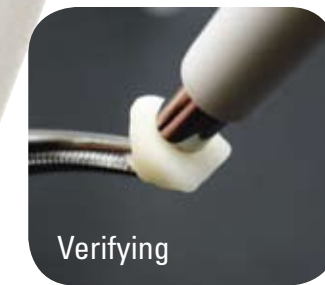
- In-Ceram® all-ceramic crowns and veneers with VM® porcelain
- PFMs
- Direct or indirect restorations with 3D-Direct™ and VITA Zeta® composite
- CAD/CAM full-contour restorations with VITABLOCS® and TriLuxe®



Measurements during the buildup process display the accuracy of the shade and where adjustment may be required.



The ceramist can verify any shade discrepancies from the initial build up biscuit firing and know what to specifically adjust, regardless if the crown is in the biscuit bake or pre-glazed, wet or dry!



In this measurement example, the crown is "Good", with no need for adjustment. Should the crown be less of a match, the term "Fair" will appear, illuminating the appropriate discrepancies. Should "adjust" be displayed, the shade is unacceptable.

"Our ceramists and quality control people find the VITA Easyshade easiest and most accurate and give it a 9 (out of 10).

- Rudy Ramirez, CDT
General Manager
Fixed Prosthodontics Glidewell





The pressure of getting a perfect shade match has never been higher due to patients' increased attention to esthetic appearance.

The VITA Easyshade measures a precise shade instantly and prescribes the best VITA shade under any lighting condition.



The VITA Easyshade also provides a qualitative scale of translucency that cannot be measured with typical camera-based dental shade measurement devices.



"Often teeth dehydrate during the visual shade assessment, this machine takes only seconds"

- J. Braun, DDS, MS
Private Practice, Saginaw, MI



Narrow tip for measuring shades practically anywhere in the mouth



There are 19 individual fiber optics that illuminate the tooth with sensors for the spectrometers to capture every nuance of the shade.



The VITA Easyshade measures a basic overall tooth shade or separates the tooth into cervical, middle and incisal areas, depending on your preference.

"The VITA Easyshade offers fast, accurate shade measurements with no loss of 'down time' that is typical with alternative devices. The payoff... exceptional aesthetic results!"

- Edward Lowe, DMD
Private Practice, Vancouver, BC, Canada

"The age-old challenge of taking an accurate shade has been simplified. The VITA Easyshade has relieved my middle-aged eyes of having to zero in on just the right porcelain shade."

- Martin B. Goldstein, DMD
Wolcott, Connecticut





Quality Control
In the
Laboratory...



VITA Easyshade®

1 PRECISE SHADE RESULT



Point



Click



Done